

LUNCH SPECIALS

1. **SASHIMI**** (Assorted, Sliced Fresh Raw-Fish, 12 Slices) ----- \$9.95
2. **SUSHI**** (Sliced Raw-Fish on the rice, 12 Pieces) ----- \$9.95
3. **CHIRASHI**** (A Variety of Sliced Raw Fish [sashimi] over Sushi Rice) ----- \$10.95
4. **TEKKA (TUNA) DON**** (Sliced Fresh Tuna over Sushi Rice) ----- \$10.95
5. **SPICY TUNA DON**** (Spicy Tuna over Sushi Rice) ----- \$10.95
6. **TEMPURA** (Shrimp 3p, Crab 1p & Vegetables Dipped in Batter and Deep-Fried) --- \$9.50
7. **VEGETABLE TEMPURA** (Vegetables Dipped in Batter and Deep-Fried) ----- \$7.50
8. **BEEF TERIYAKI** (Broiled Beef with Teriyaki Sauce) ----- \$9.50
9. **SALMON TERIYAKI** (Broiled Salmon with Teriyaki Sauce) ----- \$8.50
10. **CHICKEN TERIYAKI** (Broiled Chicken with Teriyaki Sauce) ----- \$7.95
11. **SPICY CHICKEN & BROCCOLI DON** (Spice Chicken & Broccoli over Rice) ----- \$7.50
12. **OYAKO DON** (Chicken, Vegetable, and Egg over Rice) ----- \$7.50
13. **KATSU DON** (Pork, Vegetable, and Egg over Rice) ----- \$8.50
14. **TENDON** (Shrimp 2p & Vegetable over Rice) ----- \$8.95
15. **UNAGI DON** (Smoked Eel with Special Sauce over Rice) ----- \$10.50
16. **NOODLES** (NABEYAKI UDON, SOBA, RAMEN, HIYASHI-CHUKA) ASK AVAILABILITY ----- \$8.95
17. **YAKIZAKANA (GRILLED FISH) LUNCH SET** ----- ask your server

LUNCH-BOX SPECIALS**

A \$7.95

ROLL, CHICKEN TERIYAKI, &
VEGETABLE TEMPURA



B \$8.95

ROLL, SALMON TERIYAKI, and SHRIMP &
VEGETABLE TEMPURA



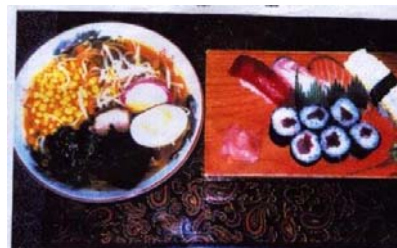
C \$9.95

ROLL, BEEF TERIYAKI, and SHRIMP &
VEGETABLE TEMPURA



D \$12.50

SUSHI COMBINATION w/ CHOICE OF RAMEN or
UDON or SOBA



** Meals are served with Soup and Salad except Noodles, which are served only with salad*

** Soup and Salad also come with Dollar Sushi with the order of 8 pieces or more*

**May Contain raw or undercooked ingredients. Consuming raw or undercooked meats, poultry, seafood, shellfish, or eggs may increase your risk of food borne illness.